

PROPANE PRESS

An Informative Newsletter for Delta Liquid Energy Customers

Spring 2020

Lock in Your Winter Propane Gallons at Summer Prices

Pre-Buy Your Estimated Winter Use NOW and You Could SAVE BIG

Though this winter was not as cold for many of our customers as it has been in the past, they still saved by buying propane for the winter months in the summer. Delta Liquid Energy's Pre-Buy Program allows you to pre-buy your propane now at an often lower cost compared to traditional winter prices. This alleviates worrying about another bill to pay during the holiday season when you may be spending more money on other things.



At DLE, we want to help alleviate YOUR potential for costly deliveries during the colder months, starting in October. By using our pre-buy program this spring, you will lock in a price for your October 2020 through March 2021 deliveries. By pre-buying you lock-in a price per gallon that is often lower than winter market prices. Many DLE customers have seen savings over this program's 28-year run, now it's your turn to save.

Have you participated in the program for at least FIVE consecutive years? Contact us to learn about ADDITIONAL savings you could receive.

HOW THE DLE PRE-BUY PROGRAM WORKS

1. Give your local customer service representative a call (find contact information on Page 2) no later than Wednesday, July 1, 2020. Our customer service representatives will assist in estimating your winter use based on your previous purchase history between October and March. *Don't worry if you are a new customer or have never participated – we have plenty of experience estimating for new users too! Please just let us know what you will be using your propane for.*
2. Lock in your pre-buy price by making a bulk payment* by Wednesday, July 1, 2020, OR by signing up for our NO INTEREST payment program** of eight consecutive, monthly installments.
3. Start receiving your winter deliveries on or after Thursday, Oct. 1, 2020.
4. Stay warm and happy this winter with a fixed price and peace of mind that your propane savings could be a bundle!

* Bulk payment plan requires a set-up fee of \$25.

** Payment plan requires a set-up fee of \$50. Payments will start no later than July 1, 2020, and require a valid credit card on file for automatic payments.

In This Issue:

Page 1 Pre-Buy Propane at Summer Prices Before July 1, 2020

Page 2 Get Ready for Fire Season

Page 3 How Solar Panels Impact the Environment

Page 4 Look Inside: Pre-Buy & the Effect of Solar Power



Find us on

Facebook

facebook.com/deltaliquidenergy



Proposition 65, the Safe Drinking Water and Toxic Enforcement Act of 1986

To comply with Proposition 65 & the Safe Drinking Water and Toxic Enforcement Act of 1986, we are obliged to issue the following warning:

PROPANE contains chemicals known to the State of California to cause cancer, birth defects, or reproductive harm. State law requires us to warn you of the presence of these chemicals. Benzene, soot and formaldehyde are such chemicals. A trace amount of benzene may occur in propane, but will normally be consumed during combustion. Exposure can occur in and around oil fields, refineries, chemical plants, transport and storage operations, such as pipelines, marine terminals, tank trucks, and other facilities or equipment.

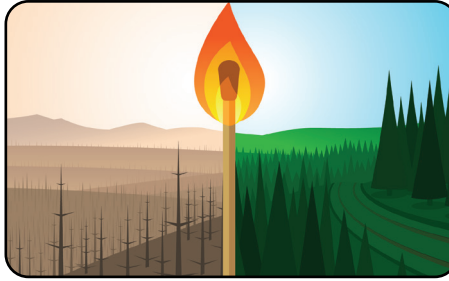
Exposure through leaking gas is possible. Soot and formaldehyde, byproducts of burning gas, are minimized by proper combustion. Delta Liquid Energy encourages all its customers to use propane safely. You should read and follow all use, care, and manufacturer instructions for propane appliances and equipment. Proper ventilation and frequent inspection of propane appliances and equipment are highly recommended.

Our service technicians are available to check and adjust your propane gas appliances. A warning odor is added to propane so that leaks of unburned gas can be quickly detected. If gas odor is detected, call us immediately.

How to Prepare Your Home for Fire Season

Find Out What You Should Include in Your Emergency Kit

Fire season is hardly limited to summer now, as wildfires have been happening year-round. Are you prepared if the next wildfire happens near you? Read on for tips from Cal Fire on how to create a defensible space and what to include in your emergency kit.



To create a defensible space around your home, the first step is to focus on Zone 1, which extends 30 feet from buildings, structures and decks.

- ✓ Remove all dead plants, grass and weeds
- ✓ Remove dead or dry leaves and pine needles from the yard, roof and rain gutters
- ✓ Trim trees regularly to keep branches a minimum of 10 feet from other trees
- ✓ Remove branches that hang over your roof and keep dead branches 10 feet away from the chimney
- ✓ Relocate wood piles into Zone 2 (see below for specifics on Zone 2)
- ✓ Remove or prune flammable plants and shrubs near windows
- ✓ Remove vegetation and items that could catch fire from around and under decks
- ✓ Create a separation between trees, shrubs and items that could catch fire, such as patio furniture, wood piles, swing sets, etc.

Next, get Zone 2 ready. Zone 2 extends out 100 feet from buildings, structures and decks.

- ✓ Cut or mow grass down to a maximum height of four inches.
- ✓ Create horizontal spacing between shrubs and trees.
- ✓ Create vertical spacing between grass, shrubs and trees.
- ✓ Remove fallen leaves, needles, twigs, bark, cones, and small branches. However, they may be permitted to a depth of three inches.

Emergency Supply Kit Checklist

- Three-day supply of nonperishable food & three gallons of water per person
- Map marked with at least two evacuation routes
- Prescriptions & special medications
- Change of clothing
- Extra eyeglasses or contact lenses
- An extra set of car keys, credit cards and cash
- First aid kit
- Flashlight
- Battery-powered radio and extra batteries
- Sanitation supplies
- Copies of important documents (birth certificates, passports, etc.)
- Pet food and water, if this applies

Items to take if time allows:

- Easily carried valuables
- Family photos and other irreplaceable items
- Personal computer information on hard drives and disks
- Chargers for cell phones, laptops, etc.

With the high risk of fires, it's important to be ready if you have to evacuate your home. ReadyforWildfire.org is full of information about being ready for wildfires. Always keep a sturdy pair of shoes and a flashlight near your bed and handy in case of a sudden evacuation at night.



Service Locations

San Luis Obispo County

1960 Ramada Drive
Paso Robles, CA 93446
(805) 239-0616

Santa Barbara County

755 S. Blosser Road
Santa Maria, CA 93458
(805) 925-6050

Ventura County

1620 Lemonwood Drive
Santa Paula, CA 93060
(805) 525-3311

Antelope Valley

42165 North Sierra Hwy.
Lancaster, CA 93535
(661) 940-3120

Kern County - Bakersfield

3400 Buck Owens Blvd.
Bakersfield, CA 93308
(661) 323-2700

Kern County - Lake Isabella

5100 Lake Isabella Blvd.
Lake Isabella, CA 93240
(760) 379-2050

Kern County - Tehachapi

1582 Goodrick Drive #6B
Tehachapi, CA 93561
(661) 771-0101

North Las Vegas

13995 Grand Valley Pkwy.
North Las Vegas, NV 89124
(702) 333-2502

Tulare County

321 E. Noble Ave., Bldg. A
Farmersville, CA 93223
(559) 592-9681

From Start to Finish, Solar Isn't Carbon Neutral

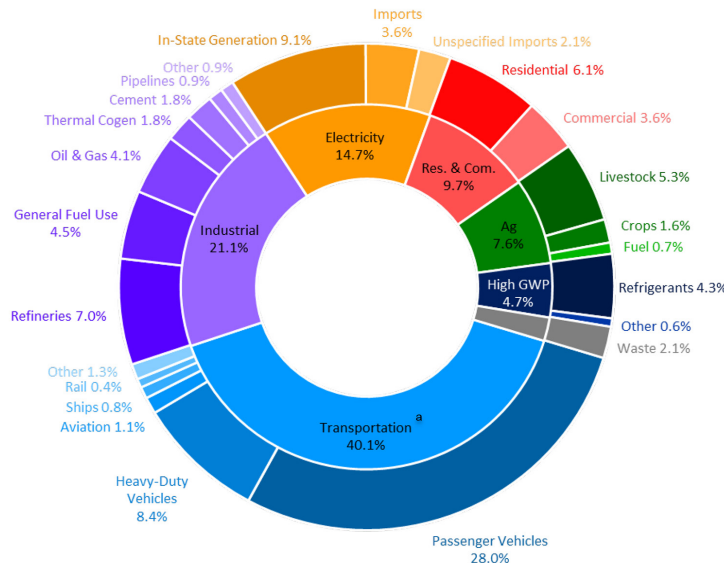
Being 100 Percent Electric is Not the Answer to Combating Climate Change Issues

Being carbon neutral is a hot subject with many Americans, businesses and government officials. These days there has been a lot of talk about how we collectively can combat the climate change issue. We rely on power every single day and that reliance has only grown with all the personal devices we now carry around with us.

In an attempt to rectify the damage done to the climate, or at least keep it from getting worse, government entities – such as the state of California – have passed mandates calling for a drastic reduction in carbon emissions. AB32 requires that California reduce its greenhouse gas emissions to 1990 levels by the end of this year. By 2050, the goal is for California to be 80 percent below 1990 emission levels. The purpose of the bill is to address the sharp rise of greenhouse gas emissions over the last century and a half, which the California Air Resources Board attributes to causing higher overall worldwide temperatures and other climate changes.

Solar is a major part of the California's plan to drastically cut harmful carbon emissions. That is evident by the California Energy Commission adopting a policy as part of Title 24 that requires that newly built and majorly renovated homes to include solar. The requirement went into effect on Jan. 1, 2020. Some cities in California have gone a step further and are requiring that homes be 100 percent electric ready, meaning that while some of the home's appliances may be operated by propane or natural gas in exchange for higher permitting fees it must be ready to be run with electricity only.

As we discussed in the last issue of The Propane Press that an energy mix makes the most sense to keep the lights on when the electricity goes out. Monterey Energy Group Founder David Knight said that using propane for space heating, water heating and power generation can be a successful model (Propane.com). Researchers at Carnegic



The figure above breaks down 2017 greenhouse gas emissions by sector and sub-sector. Transportation makes up 40 percent of emissions, while residential only make up 6.1 percent of total greenhouse gas emissions. Source: California Air Resources Board

Mellon University found that carbon emissions in the United States power sector have dropped 30 percent since 2005 because of a combination of natural gas and renewable power that replaced retired coal-fired power plants (emissionindex.org).

However, as California makes leaps to go all electric, the questions that come are: Is going all electric the right choice? How will all this electricity be generated? What environmental issues do solar panels have when used as a means of electricity generation? Solar panels

harness the sun's energy – which is free and has zero emissions – but what happens when the sun's not out? When the solar panels are not creating energy then the home draws its power from the electric grid, which is run by the local electric company. Many of Delta Liquid Energy's customers use PG&E or Southern California Edison. The companies buy the energy from the homeowner and then sell the energy back when the solar panels don't produce enough. That energy is made by converting other sources of energy, such as coal, natural gas, oil, nuclear power, wind, water and other natural sources.

According to data from the International Energy Agency, over the course of its lifetime – which is estimated at 30 years – a solar panel is estimated to emit 20 grams of carbon dioxide per kilowatt-hour of energy produced from the start of the solar panel's life to when the energy is consumed.

To make the most of your solar panels, a battery pack is required so that you have electricity whenever you need it. Because most residential units with solar don't have battery storage, the excess energy produced during peak production goes back to the power grid. When the power goes out for whatever reason, that power is cut off from the home. While California policymakers are working to address the need for energy storage, it's not something that's readily available for the average homeowner. Like the production of solar panels, solar batteries are not carbon neutral.

PROPANE PRESS

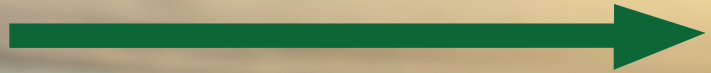


An Informative Newsletter for Delta Liquid Energy Customers

Spring 2020



Learn How You Can Save BIG Next Winter



Also Inside, How Does Solar Impact the Environment



Reduce your Carbon Footprint!
Request to receive these newsletters electronically by
submitting your email at deltaliquidenergy.com

Presort Standard
US Postage
PAID
PERMIT 102
Paso Robles, CA

Delta Liquid Energy
P.O. Box 3068
Paso Robles, CA 93447

