

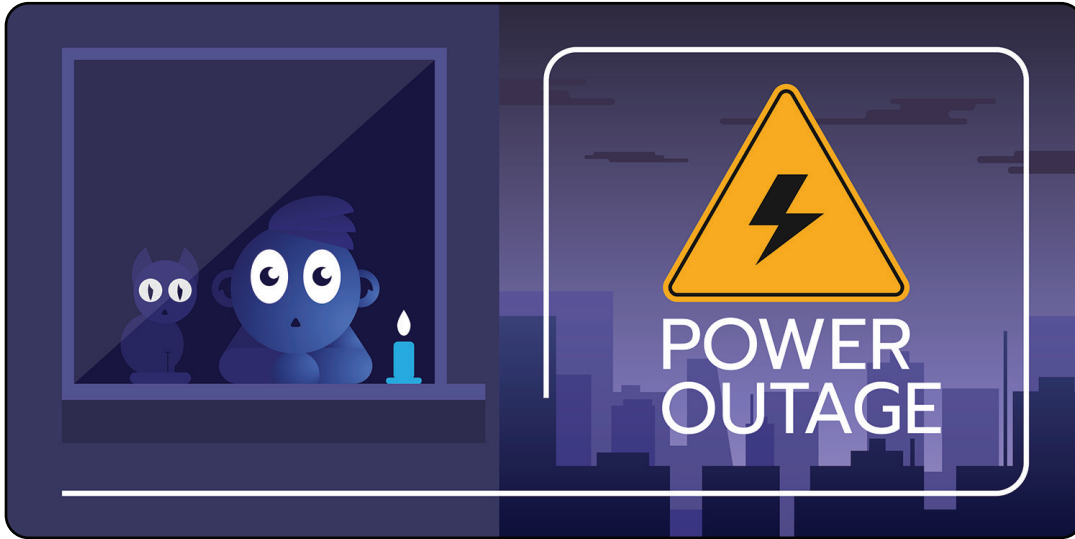
PROPANE PRESS

An Informative Newsletter for Delta Liquid Energy Customers

Winter 2020

Don't Be Left in the Dark During Power Outages

Propane Can Help Lessen the Effects



Anytime we lose electricity, we are negatively impacted and worried about how long the power will be out. Those who were affected by the rolling blackouts this past fall know all too well that if you had propane or gas appliances, you at least still had hot water for showers and a way to cook for your family. Rolling blackouts in California are not a new thing, those who have been in California for some time may remember the blackouts that affected several hundred thousand people in 2000 and 2001.

According to Eaton and its Blackout Tracker Annual Report, California was rated as the state with the highest number of reported power outages. Between 2008 and 2017, California had a total of 4,297 outages affecting more than 22 million customers. The runner-up state — Texas — experienced 1,603 outages affecting more than 11 million customers, according to the Blackout Tracker.

Even those who power their homes with solar, can still lose electricity if they don't have batteries to store the excess energy that is produced. When it's sunny, solar

Turn the page to learn how
propane generators can help

**California had
a total of 4,297
outages affecting
more than 22 million
customers between
2008 and 2017.**

Cover Story Continued on Page 2

In This Issue:

Page 1 Learn More about Using a Propane Generator to Keep the Lights On

Page 2 Continuation of the Cover Story

Page 3 Winter Weather Tips
DLE Holiday Donation Drive

Page 4 Don't Get Left in the Dark--Propane Can Help



Find us on
Facebook
facebook.com/deltaliquidenergy



Proposition 65, the Safe Drinking Water and Toxic Enforcement Act of 1986

To comply with Proposition 65 & the Safe Drinking Water and Toxic Enforcement Act of 1986, we are obliged to issue the following warning:

PROPANE contains chemicals known to the State of California to cause cancer, birth defects, or reproductive harm. State law requires us to warn you of the presence of these chemicals. Benzene, soot and formaldehyde are such chemicals. A trace amount of benzene may occur in propane, but will normally be consumed during combustion. Exposure can occur in and around oil fields, refineries, chemical plants, transport and storage operations, such as pipelines, marine terminals, tank trucks, and other facilities or equipment.

Exposure through leaking gas is possible. Soot and formaldehyde, byproducts of burning gas, are minimized by proper combustion. Delta Liquid Energy encourages all its customers to use propane safely. You should read and follow all use, care, and manufacturer instructions for propane appliances and equipment. Proper ventilation and frequent inspection of propane appliances and equipment are highly recommended.

Our service technicians are available to check and adjust your propane gas appliances. A warning odor is added to propane so that leaks of unburned gas can be quickly detected. If gas odor is detected, call us immediately.

Propane Generators are a Wise Investment for the Home or Office

panels will produce electricity, but when it's cloudy or when the sun goes down, an alternate power source is needed.

Propane appliances and propane backup generators are a great solution. For those that must keep medical equipment operating, medication

cold, power computers or just want to maintain life as-is, a propane generator will keep the power on in times of outages.

At Delta Liquid Energy, we depend on our propane-powered generators to keep us working at all 10 of our locations whenever the power goes out. Recently, our permanently installed generator — a 38kw 3 phase unit that powers our entire building — kept us online when the electricity went out at our corporate headquarters in Paso Robles. Our lights, computers and Internet stayed on, so we were able to keep working and providing excellent customer service.

DON'T WAIT TO GET YOUR PROPANE GENERATOR

During the most recent planned outages, generators were being installed at record rates and some suppliers could not keep up with the demand, so if you are planning to purchase a new propane generator, make your plans early. If you have any questions, please contact your local Delta Liquid Energy office (see contact information on this page to the right).



27 kilowatt liquid generac generator installed by Delta Liquid Energy

What Makes Propane the Best Choice for Standby Power?

- A well-maintained propane generator supplies electricity in as little as 10 seconds after an outage.
- Propane doesn't degrade over time, unlike diesel or gasoline, making it an ideal standby power fuel.
- Most propane units produce as little as 60 decibels of noise, comparable to normal conversation, which measures between 50 and 65 decibels. An unenclosed diesel generator could run in excess of 100 decibels (environmentalpowersolutions.com).
- A propane generator produces significantly fewer greenhouse gas emissions than diesel or gasoline.
- Propane is an approved clean fuel listed in the 1990 Clean Air Act.
- Depending on how much fuel you have in storage, a propane generator can handle an entire home's energy needs for days, unlike solar- or wind-powered systems.



Service Locations

San Luis Obispo County

1960 Ramada Drive
Paso Robles, CA 93446
(805) 239-0616

Santa Barbara County

755 S. Blosser Road
Santa Maria, CA 93458
(805) 925-6050

Ventura County

1620 Lemonwood Drive
Santa Paula, CA 93060
(805) 525-3311

Antelope Valley

42165 North Sierra Hwy.
Lancaster, CA 93535
(661) 940-3120

Kern County - Bakersfield

3400 Buck Owens Blvd.
Bakersfield, CA 93308
(661) 323-2700

Kern County - Lake Isabella

5100 Lake Isabella Blvd.
Lake Isabella, CA 93240
(760) 379-2050

Kern County - Tehachapi

1582 Goodrick Drive #6B
Tehachapi, CA 93561
(661) 771-0101

North Las Vegas

13995 Grand Valley Pkwy.
North Las Vegas, NV 89124
(702) 333-2502

Tulare County

321 E. Noble Ave., Bldg. A
Farmersville, CA 93223
(559) 592-9681

Read about how solar affects the environment in the Spring issue

Winter Weather Safety Tips

Staying Comfortable and Safe During the Winter is as Easy as Planning Ahead. Go Through this Cold Weather Preparation Checklist

✓ MAINTAIN AN ADEQUATE SUPPLY OF PROPANE IN YOUR TANK:

A severe winter storm can impact us all. With greater demands, we do our best to keep your tanks filled, but sometimes natural disasters may slow propane deliveries. Always know your propane tank level so that you do not run out, especially during harsh weather. If you do happen to run out of propane, the National Fire Protection Association, which issues safety standards for the industry, requires that a certified service technician **MUST** perform a full safety check of your system before turning your gas back on.

✓ KEEP THE PATH TO YOUR TANK CLEAR:

A clear path helps the delivery drivers get to your tank easily, fill it quickly, and move on to the next customer who may need help.

✓ CLEAR SNOW & ICE AROUND YOUR TANK:

If you live in the colder regions, familiarize yourself with where regulators, regulator vents, piping, tubing, and valves are located before a storm, because it is important to keep them clear. Clear any snow or debris that may be blocking access to your tank and blocking or clogging the vents. Use a broom instead of a shovel to prevent damage to your propane system components. Doing so may also increase your fuel efficiency (propane.com).

✓ IN AN EMERGENCY, USE ENERGY WISELY:

Winter storms and the resulting inaccessible roads may make propane deliveries difficult for several days. Use energy conservatively by setting your programmable thermostat to as low as is comfortable — possibly a few degrees cooler at night or when nobody is home — and be prepared with extra blankets, sleeping bags and warm winter coats. Close off any rooms that don't need to be heated. If you have a fireplace or wood-burning stove, be sure it is properly vented to the outside and does not leak gas from the flue or exhaust into the indoor area.

✓ STAY IN REGULAR CONTACT WITH DLE:

Plan ahead and know who to call. Doing so gives you enough time to arrange a refill long before you run out of propane. See contact information on page 2.

✓ IF YOU SMELL GAS, FOLLOW THESE STEPS:

Immediately put out all smoking materials and other open flames. Do not operate lights, appliances, telephones, or cellphones. Get everyone away from the home or area where you suspect gas is leaking. If safe to do so, close or shut off the main gas supply valve on your tank by turning it to the right (clockwise). Call DLE immediately from a safe distance to report the leak. If you cannot reach your propane provider, call 911. Do not return to the area until a DLE certified technician or emergency responder says that it is safe to do so.

Delta Liquid Energy's 2019 Holiday Donation Drive

This year Delta Liquid Energy and our customers collected donations for nonprofit organizations in each of the individual communities we service. We are pleased to announce that a substantial amount of toys, nonperishable food items, and cold weather clothing went to our neighbors in need. Our contributions were distributed by The Toy Bank of Greater Paso Robles, The Food Bank of Santa Barbara County, The Salvation Army, The Community Action Partnership of Kern County, and Friends of Tulare County.



Our Paso Robles Office Donations



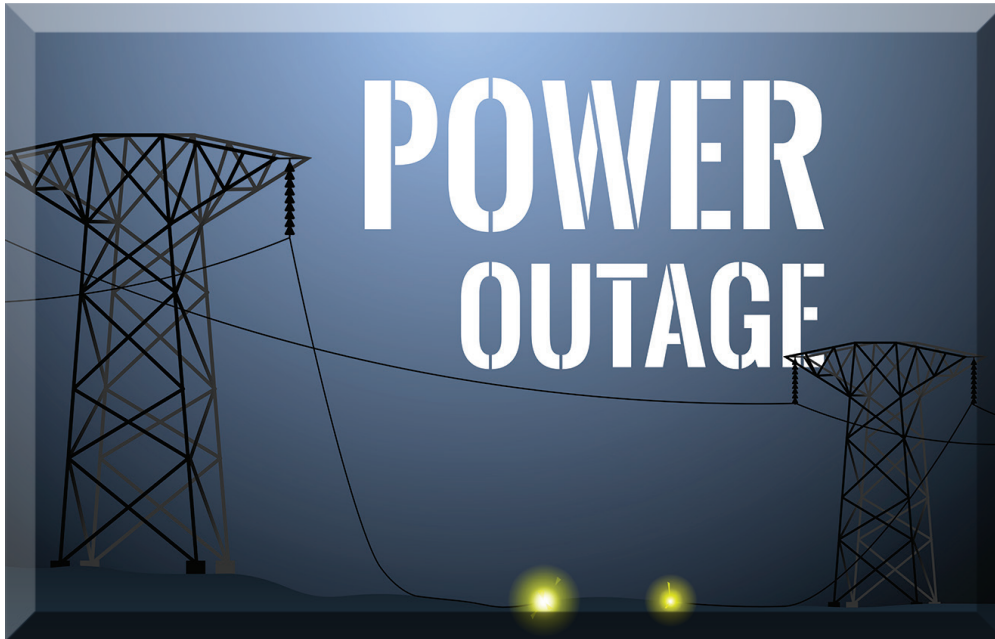
Our Bakersfield Office Donations



PROPANE PRESS

An Informative Newsletter for Delta Liquid Energy Customers

Winter 2020



PROPANE CAN HELP KEEP THE POWER ON



Find Out More Inside



Reduce your Carbon Footprint!
Request to receive these newsletters electronically by
submitting your email at deltaliquidenergy.com

Presort Standard
US Postage
PAID
PERMIT 102
Paso Robles, CA

Delta Liquid Energy
P.O. Box 3068
Paso Robles, CA 93447

